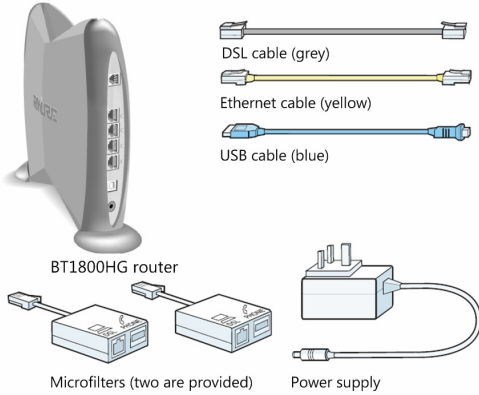


Introduction

Use this guide to get your BT1800 HG set up and connected to your Plusnet service. If you have any problems with your installation check our website for more help - <http://support.plus.net>

Your hardware pack contains:



Before you start:

Has your service been activated?

Don't follow these instructions until you have received confirmation that your broadband service has been activated.

Have you got your broadband username and password to hand?

To complete the set up of your broadband hardware you'll need your broadband username and password.

Service	Broadband username format
Plusnet	username@plusdsl.net
Force9	username@f9.co.uk
Free-Online	username@freeonline.net

Have you uninstalled any previous hardware devices?

If you already have a USB broadband modem installed on your computer it must be uninstalled before continuing.

USB Support

You may need to download USB drivers in order for this type of connection to work. These can be found on the accompanying CD, or can be downloaded from our website.

<http://portal.plus.net/support/hardware/bt1800.zip>

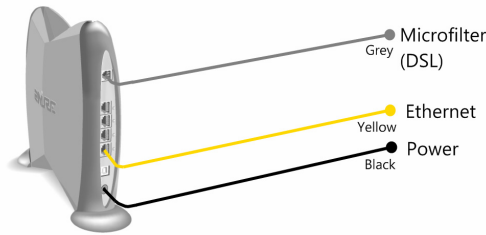
Fitting your microfilters



1) Plug one of the provided microfilters into your telephone socket. Any devices that were attached should then be plugged into the "Phone" socket of the microfilter.

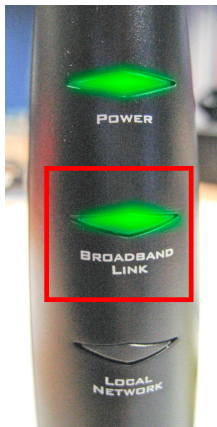
Important: All telephone extensions that have a device attached should also have a microfilter attached in the same way. This applies to extensions that are used by any telephone device, fax machines, answer machines, sky boxes etc.

2) Plug the Power Adapter into the back of your BT1800 HG (socket marked 'Power'), then plug the other end of the adapter into the nearest mains power socket.



3) Plug one end of the grey broadband cable into the DSL socket on the back of the BT1800, plug the other end into the microfilter (attached to your phone line in step 1). The microfilter socket is also marked DSL.

4) Ensure that the power is switched on and watch the lights on the front of the BT1800 HG.



5) Wait till the power light stops flashing and turns green. The DLS status light will flash. Wait until it stops flashing before proceeding.

See the troubleshooting section for more information about the status lights.

6) You can connect using one of three methods. **Ethernet, Wireless or USB**, each connection type is addressed in the next section.

Connecting to your BT1800 HG

Connecting with Ethernet



1) Plug the yellow Ethernet cable into LOCAL ETHERNET port 1 (Any of the 4 available ports will work.)

2) Plug the other end of the Ethernet cable into your computer's Ethernet Port. The Ethernet status light on the front of your BT1800 HG will now light up. If the status light doesn't light up, check your cable is connected properly, check that your computer's network adapter is working.

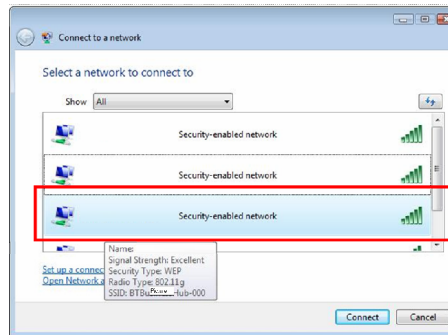
3) Proceed to the section called **Connecting to the Internet**.

Connecting with Wireless

(Requires that your computer be equipped with a wireless adapter)

1) Ensure that your computer's wireless adapter card is installed and working properly.

2) Use your wireless adapter's connection utility, or from **My Network Places** select **Connect to a network**.



3) Your BT 1800 HG will show up as **2Wire-xxx**. Click on it, then click the **Connect** button.

4) A window will open, asking you to type in the network Security Key or pass phrase for your BT1800 HG router.

5) You need to type in the security key that is written on the label on the bottom of the BT1800HG. Use the second number, not the serial number on the top of the label. When typed in, click **Connect**.

6) Proceed to the section called **Connecting to the Internet**.

Connecting with USB

We recommend using USB only if absolutely necessary. You will need to download drivers before installing your BT1800HG. These are located on the CD or can be downloaded from our website. <http://portal.plus.net/support/hardware/bt1800.zip>

1) Double-click on the downloaded driver file. Run the file and save the drivers on your computer.

2) Plug the blue USB cable into the USB socket of your BT1800HG.



3) Plug the other end of the USB cable into a USB socket on your computer.

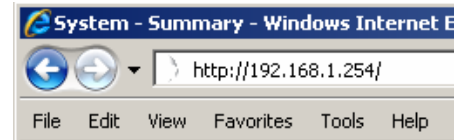
4) A window will appear asking to Add New Hardware. Proceed with the on-screen

instructions. When asked to locate the driver files, select the location where the driver files were downloaded.

5) The USB drivers will now install. This may take a few minutes. Once complete, check that the power and USB light status lights are both green. Then proceed with the next section, Connecting to the Internet.

Connecting to the Internet

1) Open up a web browser. Ignore the message that comes up saying that "Cannot connect to server". In the address line of your browser type in <http://192.168.1.254>.



2) The BT1800HG Setup screen will appear.

3) Next, click on **Run System Setup Wizard**.



4) First you will need to enter a Key Code. This ensures that UK settings are automatically applied to your hardware.

If the Key Code is not automatically populated, type in **528Y-27G4-A22Z-22BJ-B22V**



5) Click **Next** and proceed to the next screen. Select the default Greenwich Mean Time. Click **Next**.

TIME ZONE

Please select your time zone:

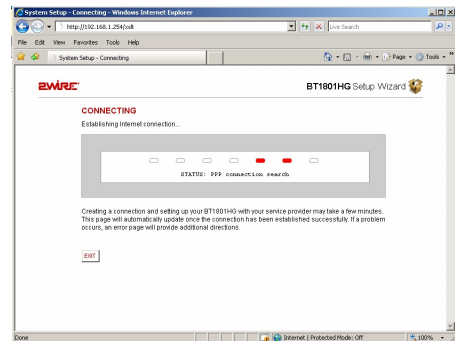


6) On the Set Up Connection Info screen, type in your broadband username and password.

Your broadband username will take the following form, where 'username' should be swapped for your own account username. Your password will be the same as the one you use to access the Member Centre on the Plusnet website.

Service	Broadband username format
Plusnet	username@plustsl.net
Force9	username@f9.co.uk
Free-Online	username@freeonline.net

7) The BT1800HG will now attempt to connect to your broadband service. If you encounter a problem, click **BACK**, check and retype your username and password.



8) Your BT1800HG will now be connected to the Internet. You can confirm this by checking that the Internet status light is green. Congratulations, your broadband service is now ready to use.

Firewall (advanced feature)

The BT1800HG comes with a built-in firewall, to help protect your system from intrusion. The firewall's default setting will offer you excellent protection. You may need to alter the firewall's settings if you need to run Internet services from your network.

Changing your firewall settings

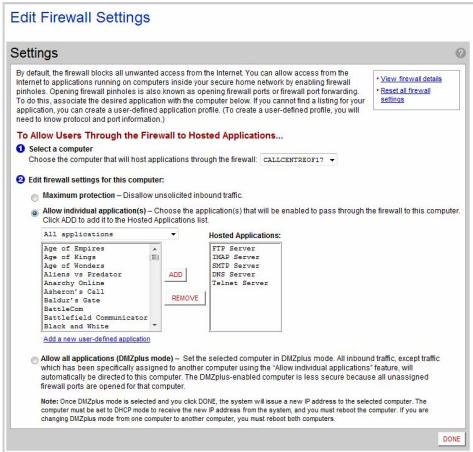
1) Click on the **Firewall** button on the top bar of your 1800HG control screen.



2) Click on **Firewall Settings** on the grey menu bar.



3) On the Firewall Settings screen you can select from a list of applications and games that you wish Internet users to be able to access on your network. Just click on an application and click the **Add** button. Once you have selected all the applications you need, click **Done**.



Access Control (advanced feature)

Your BT1800 HG includes Access Control, letting you restrict what content users on your network can access, and what times they can access the Internet.

Access Controls



Internet Access Control

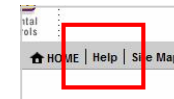
Use Internet Access Control to change the times that you wish to allow different users access to the Internet. You can specify what times and days for access by different types of activity, such as browsing and Instant Messaging.

Content Screening

Use Content Screening to limit the kind of content that users can browse. You can assign each user to one of two groups, each offering different content filters.

Troubleshooting

You can find extensive online help on the BT1800 HG control screen by clicking **Help** on the grey menu.



Is the Broadband Red?

This would indicate that your connection can't be made to the local exchange. Check your microfilters - there should be a microfilter on each telephone extension on which a telephone device is used. Make sure that you don't use two microfilters on the same extension.

If you are using a telephone extension cable, try connecting your BT1800 HG on the master telephone socket. Telephone extensions are a common cause of connection problems, it is advisable that you use the wireless networking rather than a telephone extension cable, if you are unable to place your computer close to your master telephone socket. See the next section for further information.

Status Lights

Power	State
Off	Router not powered, check power cable and power socket.
Blinking Green	Router is starting up, should stop blinking after a short time.
Blinking Orange	Router is updating its firmware, wait till Hub restarts.
Red	System error, restart the router.

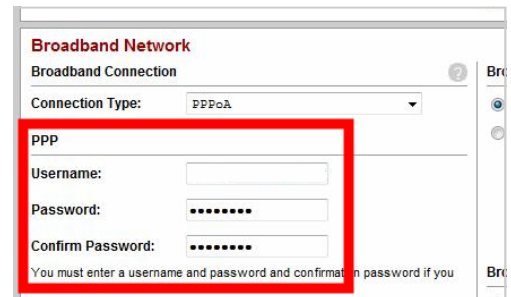
Broadband	State
Orange	Disconnected
Solid Green	Broadband service connected.
Blinking Green	Attempting to connect to broadband service.
Solid Red	Connection to broadband failed. Recheck username and password.

Ethernet, Wireless or USB	State
Off	No device connected.
Solid Green	Device connected.
Flashing Green	Device sending / receiving data.

Broadband Link flashes / turns red

If the Broadband Link light flashes then turns red, this indicates that your broadband service has been detected, but you are not able to connect to it.

The most common reason for this is incorrect username or password information. You can retype these by clicking on **Broadband Link** and **Advanced Settings**.



If you are using a telephone extension cable, try connecting your BT1800 HG on the master telephone socket. Telephone extensions are a common cause of connection problems, it is advisable that you use the wireless networking rather than a telephone extension cable, if you are unable to place your computer close to your master telephone socket. See the next section for further information.